



Data sheet

blueplanet

3.0 TL3 | 4.0 TL3 **NEW**
5.0 TL3 | 6.5 TL3
7.5 TL3 | 8.6 TL3
9.0 TL3 | 10.0 TL3

Your quickest way to the highest yields.

The transformerless, three-phase inverters blueplanet 3.0 TL3 to 10.0 TL3.

All of the advantages of the larger 3-phase inverters can be found in one power class which is just perfect for private roof systems as well as small commercial applications.

The blueplanet 3.0 TL3 to 10.0 TL3 come, without exception, with 2 MPP trackers which can get to grips with all imaginable design configurations of a modular PV generator. As such, each MPP tracker can process the whole AC output. If you also consider the extremely wide input voltage range from 200 V to 950 V, multiple string configurations become possible. So, with these characteristics, the blueplanet TL3 present themselves as the most flexible three-phase inverters in their power class on the market.

The DC and AC periphery of the blueplanet TL3 ensures the quickest cabling thanks to plug-in connectors and the

menu selection is performed conveniently using the graphic display. So that the appliances can stand up to the harshest conditions out in the open, their compact housing is built to IP65 protection class. Nevertheless, weighing just 30 kg they can still be carried easily.

The standard incorporation of RS485, Ethernet and USB ensures elegant communication and convenient monitoring – even more interfaces are optionally available. The data logger and the web server are already integrated as standard! As a result, these inverters offer complete monitoring and strong communication in any environment.

An extension module with 4 digital inputs allows performance targets sent by the grid operator via ripple control receiver to be put into action by the inverters themselves; this does away with an in-

termediate data logger. Please find more information about the extension module on our website.

If you want to use your self-generated solar power in your own home, the blueplanet 3.0 TL3 to 10.0 TL3 also come with our Privatt function for managing self-consumption.

Your declaration of solar independence becomes complete when you use an intelligent energy storage system; it allows you to use your own clean energy whenever you want to. Fitted with these blueplanet TL3, your private solar power plant can be upgraded with a storage system at any time. And, our blueplanet gridsave eco 5.0 TR1 battery inverter will take care of the energy management of your PV storage system too.

Technical data

blueplanet 3.0 TL3 | 4.0 TL3 | 5.0 TL3

Electrical data	3.0 TL3 PRELIMINARY	4.0 TL3 PRELIMINARY	5.0 TL3
DC input			
Max. recommended PV generator power	3 600 W	4 800 W	6 000 W
MPP range@Phom	200 V ... 800 V	200 V ... 800 V	240 V ... 800 V
Operating range	200 V - 950 V	200 V - 950 V	200 V - 950 V
Min. DC voltage/starting voltage	200 V / 250 V	200 V / 250 V	200 V / 250 V
No-load voltage	1000 V	1000 V	1000 V
Max. input current	2 x 11.0 A	2 x 11.0 A	2 x 11.0 A
Max. short circuit current [I _{SC max}]	2 x 16.0 A	2 x 16.0 A	2 x 16.0 A
Number of MPP trackers	2	2	2
Max. power/tracker	3.2 kW	4.2 kW	5.2 kW
Number of strings	2	2	2
AC output			
Rated output	3000 VA	4000 VA	5000 VA
Supply voltage	acc. to local requirements	acc. to local requirements	acc. to local requirements
Rated current	3x4.35 A	3x5.80 A	3x7.25 A
Rated frequency	50 Hz	50 Hz	50 Hz
cos phi	0.30 inductive ... 0.30 capacitive	0.30 inductive ... 0.30 capacitive	0.30 inductive ... 0.30 capacitive
Number of grid phases	3	3	3
General electrical data			
Max. efficiency	98.3 %	98.3 %	98.3 %
Europ. efficiency	97.4 %	97.4 %	97.4 %
Night consumption	1.5 W	1.5 W	1.5 W
Circuitry topology	transformerless	transformerless	transformerless
Mechanical data			
Display	graphical display + LEDs	graphical display + LEDs	graphical display + LEDs
Control units	4-way navigation + 2 buttons	4-way navigation + 2 buttons	4-way navigation + 2 buttons
Interfaces	standard: 2xEthernet, USB, RS485, Fault signalling relay optional: 4-DI	standard: 2xEthernet, USB, RS485, Fault signalling relay optional: 4-DI	standard: 2xEthernet, USB, RS485, Fault signalling relay optional: 4-DI
Fault signalling relay	potential-free NOC max. 30 V / 1 A	potential-free NOC max. 30 V / 1 A	potential-free NOC max. 30 V / 1 A
Connections	DC: SUNCLIX AC: plug	DC: SUNCLIX AC: plug	DC: SUNCLIX AC: plug
Ambient temperature	-25 °C ... +60 °C ¹⁾	-25 °C ... +60 °C ¹⁾	-25 °C ... +60 °C ¹⁾
Cooling	temperature-dependent fan	temperature-dependent fan	temperature-dependent fan
Protection class	IP65	IP65	IP65
Noise emission	< 53 dB(A)	< 53 dB(A)	< 53 dB(A)
DC switch	integrated	integrated	integrated
Casing	aluminium casting/ innovative ASA/PC	aluminium casting/ innovative ASA/PC	aluminium casting/ innovative ASA/PC
H x W x D	522 x 363 x 246 mm	522 x 363 x 246 mm	522 x 363 x 246 mm
Weight	30 kg	30 kg	30 kg
Certifications			
Safety	EN 61000-6-1/-2/-3, IEC 62109-1/-2		
Grid compliance	VDE-AR-N 4105, VDE0126-1-1, ÖVE/ÖNORM E 8001, UTE C 15-712-1, G83/2, G59/3, CEI-021, EN 50438, C10/11, ... for more see homepage/download area		

Conforms to the country-specific standards and regulations according to the country version that has been set.
¹⁾ Power derating at high ambient temperatures.

blueplanet 6.5 TL3 | 7.5 TL3 | 8.6 TL3 | 9.0 TL3 | 10.0 TL3

6.5 TL3	7.5 TL3	8.6 TL3	9.0 TL3	10.0 TL3
7 800 W	9 000 W	10 300 W	10 800 W	12 000 W
310 V ... 800 V	350 V ... 800 V	403 V ... 800 V	420 V ... 800 V	470 V ... 800 V
200 V - 950 V	200 V - 950 V	200 V - 950 V	200 V - 950 V	200 V - 950 V
200 V / 250 V	200 V / 250 V	200 V / 250 V	200 V / 250 V	200 V / 250 V
1000 V	1000 V	1000 V	1000 V	1000 V
2x11.0 A	2x11.0 A	2 x 11.0 A	2 x 11.0 A	2 x 11.0 A
2x16.0 A	2x16.0 A	2x16.0 A	2x16.0 A	2x16.0 A
2	2	2	2	2
6.7 kW	7.7 kW	8,8 kW	8.8 kW	8.8 kW
2	2	2	2	2
AC output				
6 500 VA	7 500 VA	8 600 VA	9 000 VA	10 000 VA
acc. to local requirements	acc. to local requirements	400 V / 230 V (3/N/PE)	acc. to local requirements	acc. to local requirements
3x9.5 A	3x10.9 A	3 x 12.5 A	3 x 13.0 A	3 x 14.5 A
50 Hz	50 Hz	50 Hz	50 Hz	50 Hz
0.30 inductive ... 0.30 capacitive				
3	3	3	3	3
General electrical data				
98.3 %	98.3 %	98.5 %	98.5 %	98.5 %
97.6 %	97.7 %	98.1 %	98.1 %	98.3 %
1.5 W	1.5 W	1,5 W	1.5 W	1.5 W
transformerless	transformerless	transformerless	transformerless	transformerless
Mechanical data				
graphical display + LEDs	graphical display + LEDs	graphical display + LEDs	graphical display + LEDs	graphical display + LEDs
4-way navigation + 2 buttons				
standard: 2xEthernet, USB, RS485, Fault signalling relay optional: 4-DI	standard: 2xEthernet, USB, RS485, Fault signalling relay optional: 4-DI	standard: 2xEthernet, USB, RS485, Fault signalling relay optional: 4-DI	standard: 2xEthernet, USB, RS485, Fault signalling relay optional: 4-DI	standard: 2xEthernet, USB, RS485, Fault signalling relay optional: 4-DI
potential-free NOC max. 30 V / 1 A	potential-free NOC max. 30 V / 1 A	potential-free NOC max. 30 V / 1 A	potential-free NOC max. 30 V / 1 A	potential-free NOC max. 30 V / 1 A
DC: SUNCLIX AC: plug	DC: SUNCLIX AC: plug	DC: SUNCLIX AC: plug	DC: SUNCLIX AC: plug	DC: SUNCLIX AC: plug
-25 °C ... +60 °C ¹⁾	-25 °C ... +60 °C ¹⁾	-25 °C ... +60 °C ¹⁾	-25 °C ... +60 °C ¹⁾	-25 °C ... +60 °C ¹⁾
temperature-dependent fan				
IP65	IP65	IP65	IP65	IP65
< 53 dB(A)	< 53 dB(A)	< 53 dB(A)	< 53 dB(A)	< 53 dB(A)
integrated	integrated	integrated	integrated	integrated
aluminium casting/ innovative ASA/PC	aluminium casting/ innovative ASA/PC	aluminium casting/ innovative ASA/PC	aluminium casting/ innovative ASA/PC	aluminium casting/ innovative ASA/PC
522 x 363 x 246 mm	522 x 363 x 246 mm	522 x 363 x 246 mm	522 x 363 x 246 mm	522 x 363 x 246 mm
30 kg	30 kg	30 kg	30 kg	30 kg
Certifications				
EN 61000-6-1/-2/-3, IEC 62109-1/-2				
VDE-AR-N 4105, VDE0126-1-1, ÖVE/ÖNORM E 8001, UTE C 15-712-1, G83/2, G59/3, CEI-021, EN 50438, C10/11, ... for more see homepage/download area				

Conforms to the country-specific standards and regulations according to the country version that has been set.
¹⁾ Power derating at high ambient temperatures.



blueplanet
 3.0 TL3 | 4.0 TL3 | 5.0 TL3
 6.5 TL3 | 7.5 TL3 | 8.6 TL3
 9.0 TL3 | 10.0 TL3

Up to 98.5 % efficiency

Two MPP trackers, symmetrical and asymmetrical loading possible

Multilingual menu

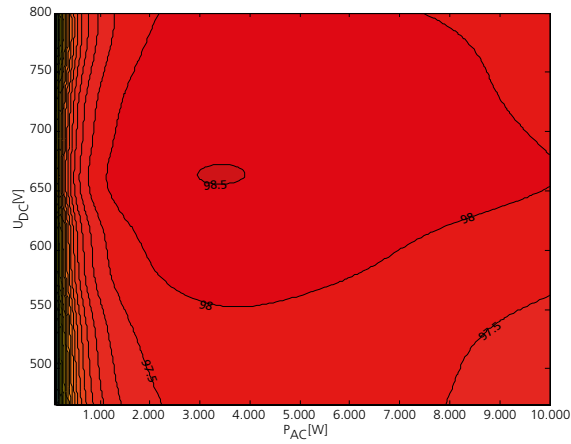
Graphical display

Data logger with web server

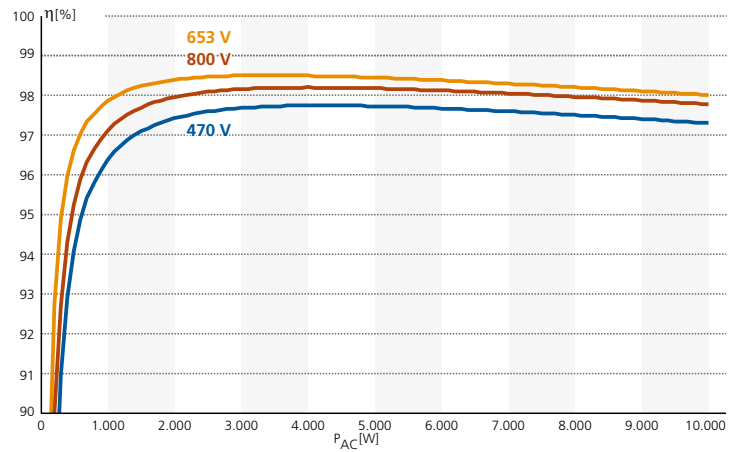
Privatt function for the self-consumption of solar power, ready for storage

Graphical Display of efficiency

3D efficiency diagram for blueplanet 10.0 TL3



Efficiency characteristic curve for blueplanet 10.0 TL3



Ihr Händler vor Ort